

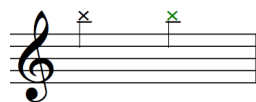
A'song

Declan Zapala (2015)

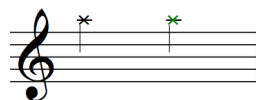
for baby Alexia.

List of Extended Techniques

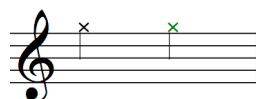
BLACK GREEN
Left Right
Hand Hand



Notehead Colour: The colour of a notehead determines whether the note is sounded as a result of a left- or right-hand manipulation of the string.



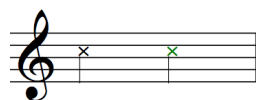
Shoulder Tap / Click: Tap underside of upper bout at its edge to create thin percussive sound (i.e. taking the fretboard as 12 o'clock, this point is at 2 o'clock on the shoulder).



Shoulder Tap / Bottom: Tap underside of upper bout at 1 o'clock to create rimshot effect.



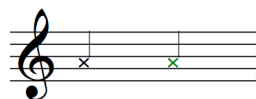
Shoulder Tap / Top: Tap topside of upper bout at 11 o'clock to create rimshot effect.



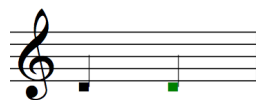
Shoulder 'Cowbell': Tap underside of upper bout at 5 o'clock to create cowbell/woodblock percussive effect.



'Snare boom': Tap topside of lower bout with heavy hand at 10 o'clock to create broad 'wolfing' percussive sound.



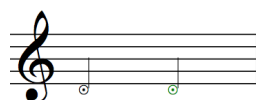
Upper Bout Tap / Bottom: Tap soundboard at the upper bout laterally below the fretboard.



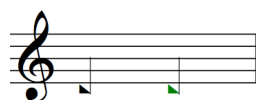
Upper Bout Tap / Top: Tap soundboard at the upper bout laterally above the fretboard.



Heel thud: Thud the heel of the hand against the soundboard at the lower bout to create a 'kick drum' percussive effect.



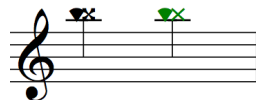
Tap Harmonic: For natural harmonics (ones with a 'o') tap node of harmonic(s) (TAB denotes number of fret that is tapped). **n.B.** for fretted harmonics, held fret number is shown in TAB, with fret number of tapped node shown in brackets.



String Tap: Tap string(s) with tip or side of finger to create percussive effect. Strings to be tapped are represented by their open note. **n.B.** Due to the tuning of this piece the D-string is represented by a C#. From bar 101 the Bass E is represented by a low A.



Slap Harmonic: Node of harmonic is touched by one hand whilst the adjacent hand slaps the string to excite the harmonic. **n.B.** for fretted harmonics, fret number of held node is shown in TAB, with fret number of slapped node shown in brackets.



Slap Note: Use either the fingers or thumb slap the strings to sound the notes.



Nut Flick: Flick/strum the strings behind the nut.

