



Crystal

Solo Guitar

Declan Zapala

List of Extended Techniques



Shoulder tap: Tap the upper shoulder of the guitar body using your right hand finger(s).



Shoulder slap: Slap the underside shoulder of the guitar body using your left hand finger(s).



Heel tap: Tap the heel of guitar with left hand thumb.



Upper bout tap - high: Tap the soundboard at the upper bout, above the soundhole.



Upper bout tap - low: Tap the soundboard at the upper bout, below the soundhole.



Bass strings click: Reach around and tap the left hand fingers against the bass strings.
Any crosshair noteheads below the stave indicate which bass string gets tapped.



Left hand hammer-on: Unless otherwise specified, hammer on multiple notes with separate fingertips in the left hand.



Right hand hammer-on: These only appear in chords that can be barréd. Reach over with the right hand and hammer on a barré across the relevant notes at the indicated fret.



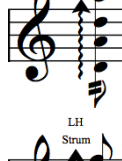
Slap bass notes: Slap the strings with the right hand to sound the notes.



Slap barréd harmonics: Touch the nodes of the harmonic at the indicated fret using a barré in the left hand and slap the strings close to the bridge with the right hand to excite the harmonics.



Slap natural harmonics: slap the right hand index finger across the strings at the indicated fret to excite the strings' natural harmonics



Rasgueado tremolo: Flick the right and 'i', 'm', and 'a' fingers outwards.



Left hand strum: strum the indicated finger across the strings using the left hand

Crystal

for Beth

Tuning
BF#DABF#

Declan Zapala
(1985-)

Mechanical ♩ = 110

1 *sostenuto* *Nat. Harm XII* *Nat. Harm VII 8^{va}* *Nat. Harm VII* *Nst. Harm V*

TAB: 12 12 12 12 X 7 7 7 12 12 12 X 7 7 5

B: 12 12 12 12 3 3 7 0 12 12 3 3

3 *Sim.* *8^{va}* *8^{va}* *8^{va}* *LH Strum*

TAB: 12 12 X 7 7 12 12 X 0 3 5 7 5 3 0 3

B: 0 12 12 3 3 7 0 12 12 0 3 3

6 *8^{va}* *8^{va}* *8^{va}* *8^{va}* *Harm V*

TAB: 0 12 12 X 7 7 12 12 X 7 7 5

B: 12 12 12 3 3 7 0 12 12 3 3

8 *8^{va}* *Harm VII 8^{va}* *8^{va}* *LH Strum*

TAB: 12 12 X 7 7 12 12 X 0 3 5 7 5 3 5 3 0

B: 0 12 12 3 3 7 0 12 12 0 3 3